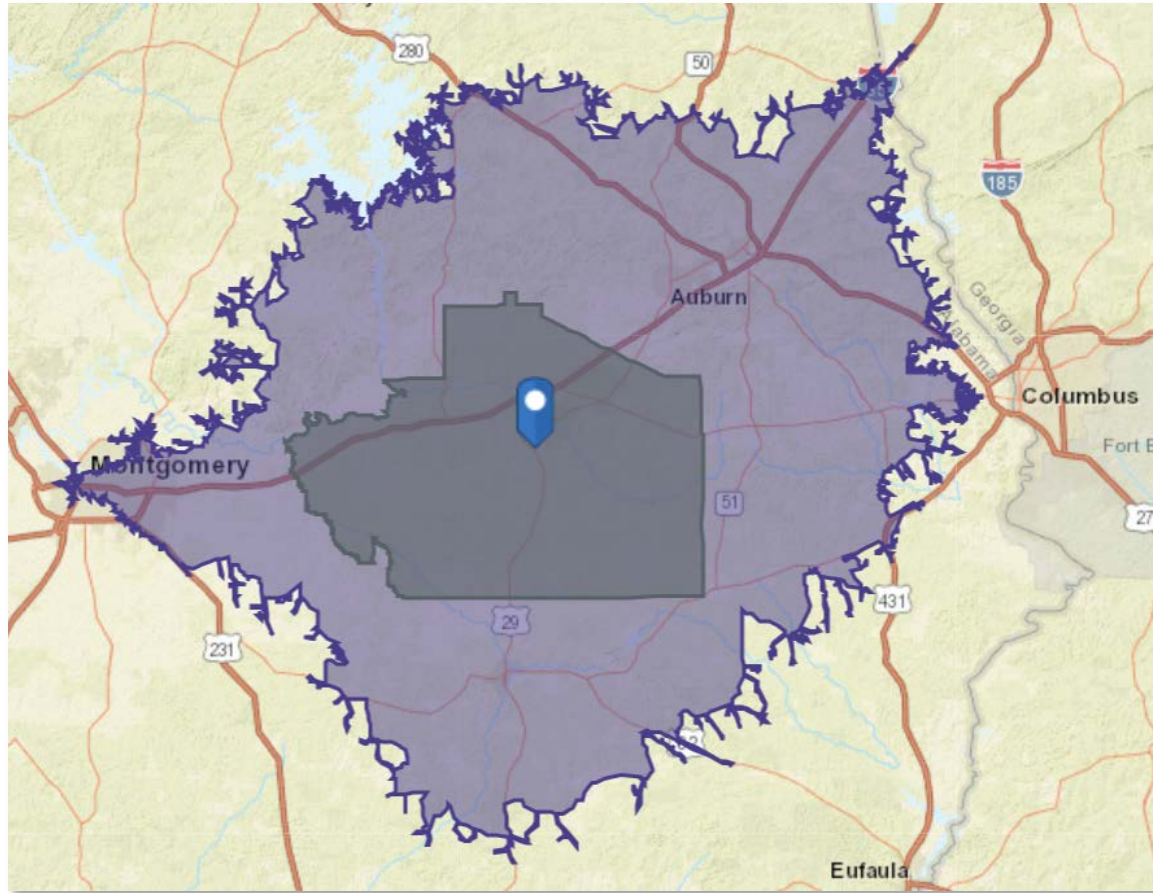




## Macon County, AL



### 45-Minute Drive-Time Analysis

**349,463**  
Population

**34.5**  
Median Age

**166,799**  
Labor Force

**156,962**  
Average Employed

**5.9%**  
Unemployment Rate

**12%**  
Percent Manufacturing Employment

Source: ESRI, 2017 data, Garner Economics



## Population

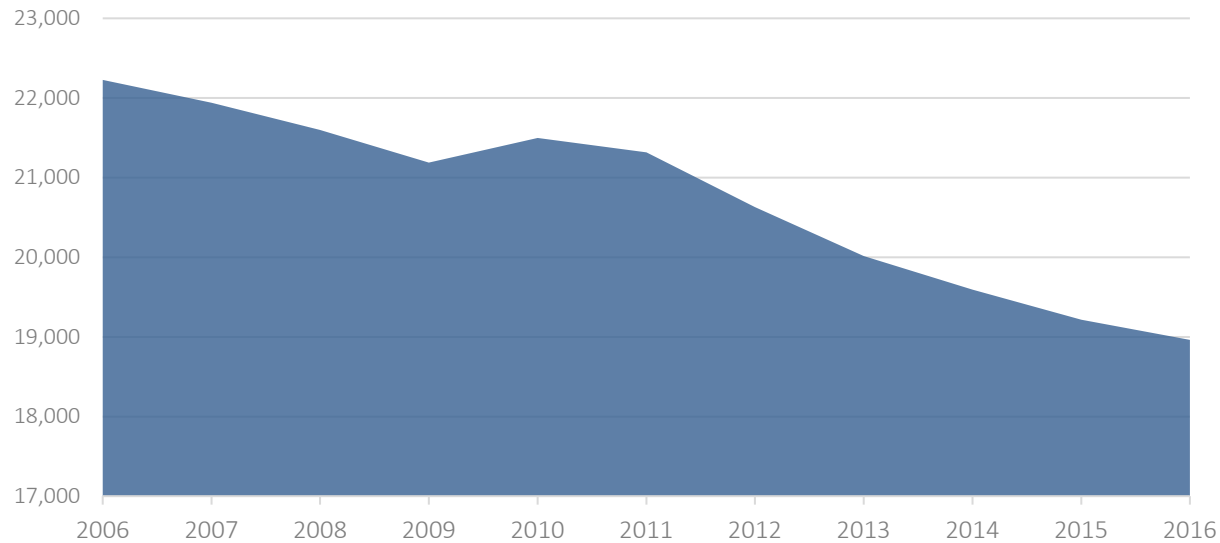
**Net Population Change**  
**Highest Relative Figure Shaded**

	2016 Population	2011-16 Change	5-Year % Change	2006-2016 Change	10-Year % Change
Macon County	18,963	-2,354	-11.0%	-3,264	-14.7%
Alabama	4,863,300	63,382	1.3%	234,319	5.1%
United States	323,127,513	11,464,155	3.7%	24,747,601	8.3%

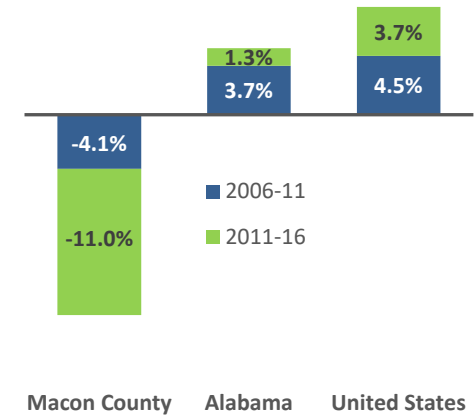


**-3,264**  
Net Population Change  
2006-2016

**Macon County Population Trends 2006-2016**



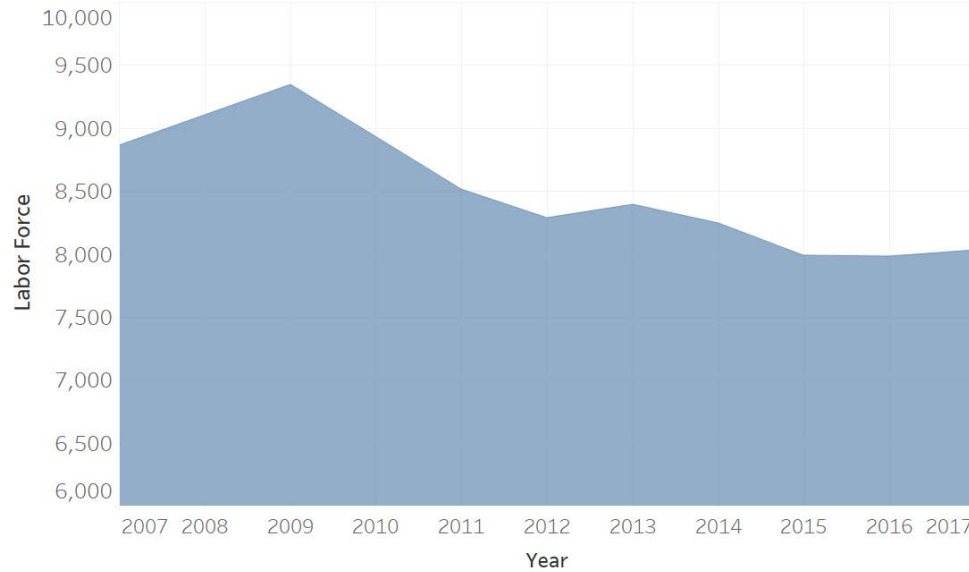
**Population Change**



Source: U.S. Census Bureau, Population Estimates, Garner Economics

## Labor Force

**Macon County**  
**Labor Force Trend 2007-2017**



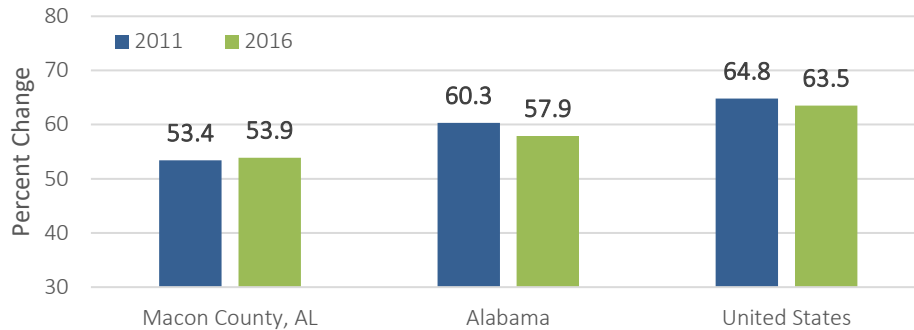
Source: U.S. Bureau of Labor Statistics, Garner Economics

**Labor Force Comparison**  
**Highest Relative Change Shaded**

Labor Force	2017 Annual Average	2012-17 Change	2012-2017 % Change
Macon County	8,034	-252	-3.0%
Alabama	2,168,444	-7,893	-0.4%
United States	160,320,000	5,345,000	3.4%
Employment	2017 Annual Average	2012-17 Change	2012-2017 % Change
Macon County	7,554	157	2.1%
Alabama	2,073,106	69,816	3.5%
United States	153,337,000	10,868,000	7.6%
Unemployment	2017 Annual Average	2012-2017 Change	
Macon County	6.0%		-4.8%
Alabama	4.4%		-3.6%
United States	4.4%		-3.7%

## Labor Force Participation

**Labor Force Participation**

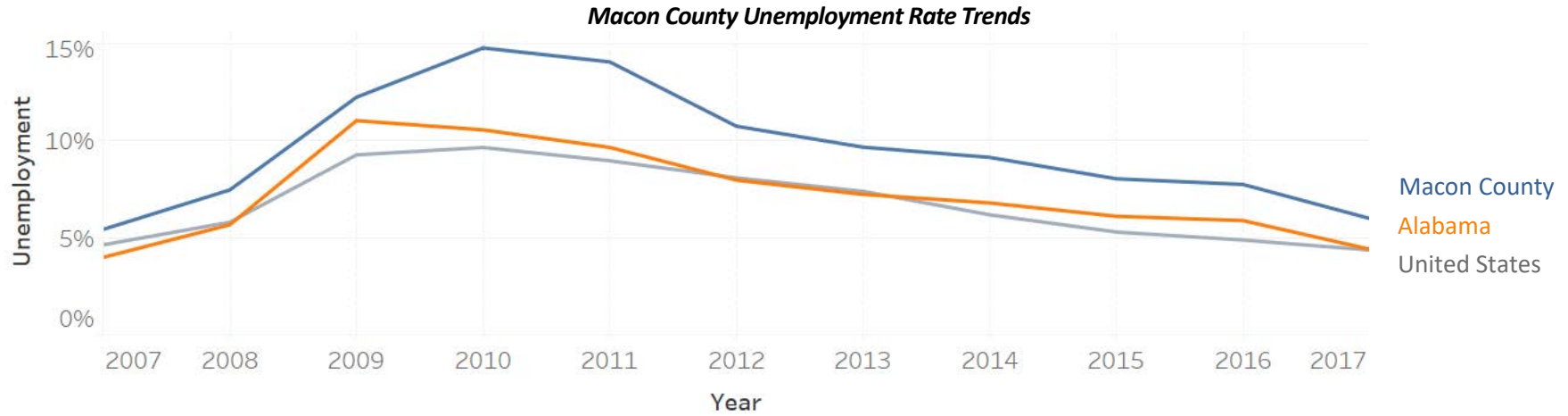


Source: U.S. Census Bureau, 5-year averages, Garner Economics

**Labor Force Participation Comparison**  
**Highest Relative Figure Shaded**

	2011	2016	2011-2016 Change
Macon County	53.4%	53.9%	0.5%
Alabama	60.3%	57.9%	-2.4%
United States	64.8%	63.5%	-1.3%

## Unemployment Trends



**Macon County Unemployment Rate 2007-2017**

	2007	2008	2009	2010	2011	2012	2013	2014	2015	2016	2017
Macon County	5.4%	7.4%	12.2%	14.8%	14.0%	10.7%	9.7%	9.1%	8.0%	7.7%	6.0%
Alabama	4.0%	5.7%	11.0%	10.5%	9.6%	8.0%	7.2%	6.8%	6.1%	5.9%	4.4%
United States	4.6%	5.8%	9.3%	9.6%	8.9%	8.1%	7.4%	6.2%	5.3%	4.9%	4.4%

Source: U.S. Bureau of Labor Statistics, Garner Economics

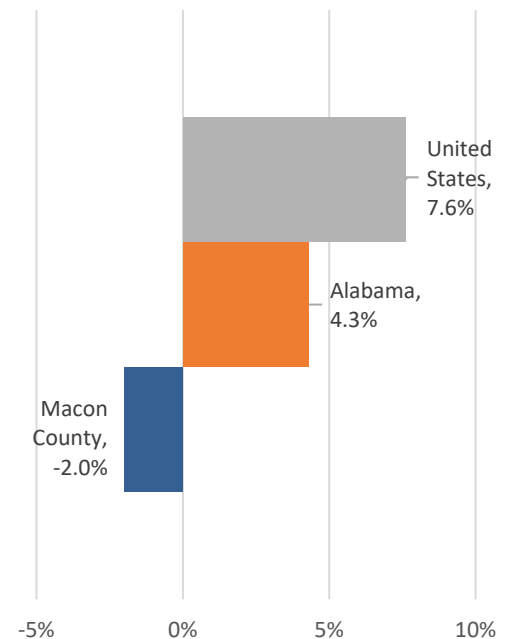
## Net Employment Change

**Net Employment Change by Industry 2012-2017**  
Sorted by Employment Change

Description	2012 Jobs	2017 Jobs	Change 2012-17	% Change 2012-17
Manufacturing	289	476	188	65.0%
Administrative & Support, Waste Management & Remediation	98	188	90	92.0%
Retail Trade	389	458	69	17.8%
Agriculture, Forestry, Fishing and Hunting	141	188	47	33.2%
Transportation and Warehousing	38	56	18	48.0%
Real Estate and Rental and Leasing	38	37	-1	-3.4%
Arts, Entertainment, and Recreation	78	67	-11	-14.6%
Educational Services	39	25	-14	-36.7%
Finance and Insurance	57	42	-15	-26.7%
Professional, Scientific, and Technical Services	80	61	-19	-23.4%
Wholesale Trade	60	41	-20	-32.5%
Other Services	258	226	-32	-12.6%
Construction	170	125	-45	-26.7%
Health Care and Social Assistance	390	304	-87	-22.2%
Accommodation and Food Services	526	421	-105	-20.0%
Government	3,184	3,005	-179	-5.6%
<b>TOTAL</b>	<b>5,834</b>	<b>5,717</b>	<b>-117</b>	<b>-2.0%</b>

Source: EMSI, Garner Economics

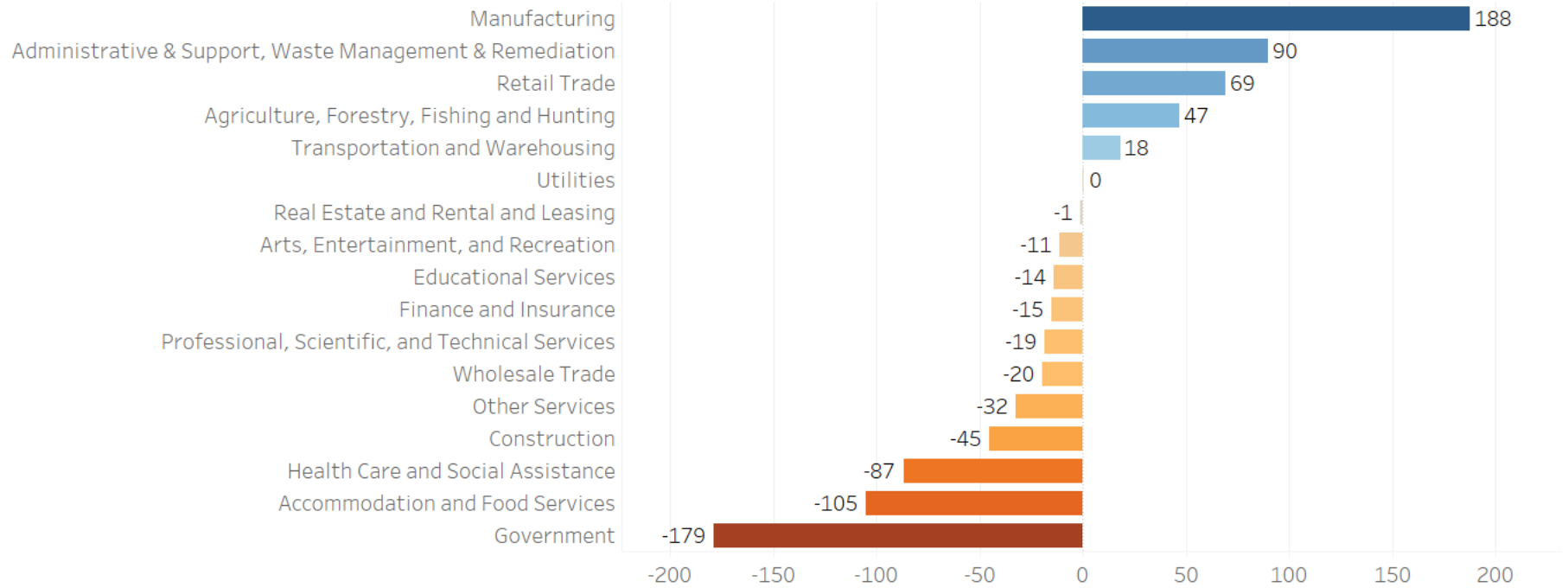
**Employment Change Comparison**  
Percent Change 2012-2017



Source: EMSI, Garner Economics



**Net Employment Change by Industry 2012-2017**  
Sorted by Employment Change



Source: EMSI, Garner Economics

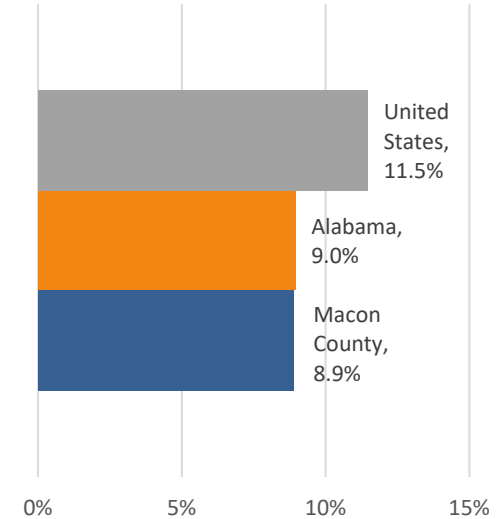
## Wage Growth

**Change in Average Wages by Industry 2012-2017**  
Sorted by Highest Wage Change

Description	2012 Wages	2017 Wages	Change 2012-17	% Change 2012-17
Educational Services	\$20,770	\$30,721	\$9,951	47.9%
Construction	\$22,883	\$29,132	\$6,249	27.3%
Agriculture, Forestry, Fishing and Hunting	\$26,620	\$31,681	\$5,061	19.0%
Administrative & Support, Waste Management & Remediation	\$17,214	\$21,896	\$4,682	27.2%
Government	\$42,409	\$46,708	\$4,299	10.1%
Manufacturing	\$42,946	\$46,133	\$3,188	7.4%
Wholesale Trade	\$33,054	\$36,039	\$2,985	9.0%
Finance and Insurance	\$34,970	\$37,635	\$2,666	7.6%
Real Estate and Rental and Leasing	\$19,942	\$22,190	\$2,248	11.3%
Transportation and Warehousing	\$32,767	\$34,517	\$1,750	5.3%
Other Services	\$17,028	\$18,243	\$1,215	7.1%
Retail Trade	\$19,090	\$19,834	\$744	3.9%
Health Care and Social Assistance	\$27,876	\$28,598	\$721	2.6%
Professional, Scientific, and Technical Services	\$48,617	\$48,662	\$45	0.1%
Accommodation and Food Services	\$18,699	\$17,728	(\$971)	-5.2%
Arts, Entertainment, and Recreation	\$41,959	\$22,377	(\$19,583)	-46.7%
<b>TOTAL</b>	<b>\$34,850</b>	<b>\$37,950</b>	<b>\$3,100</b>	<b>8.9%</b>

Source: EMSI, Garner Economics

**Wage Change Comparison**  
Percent Change 2012-2017



**2017 Average Wages**

**\$37,950**  
County

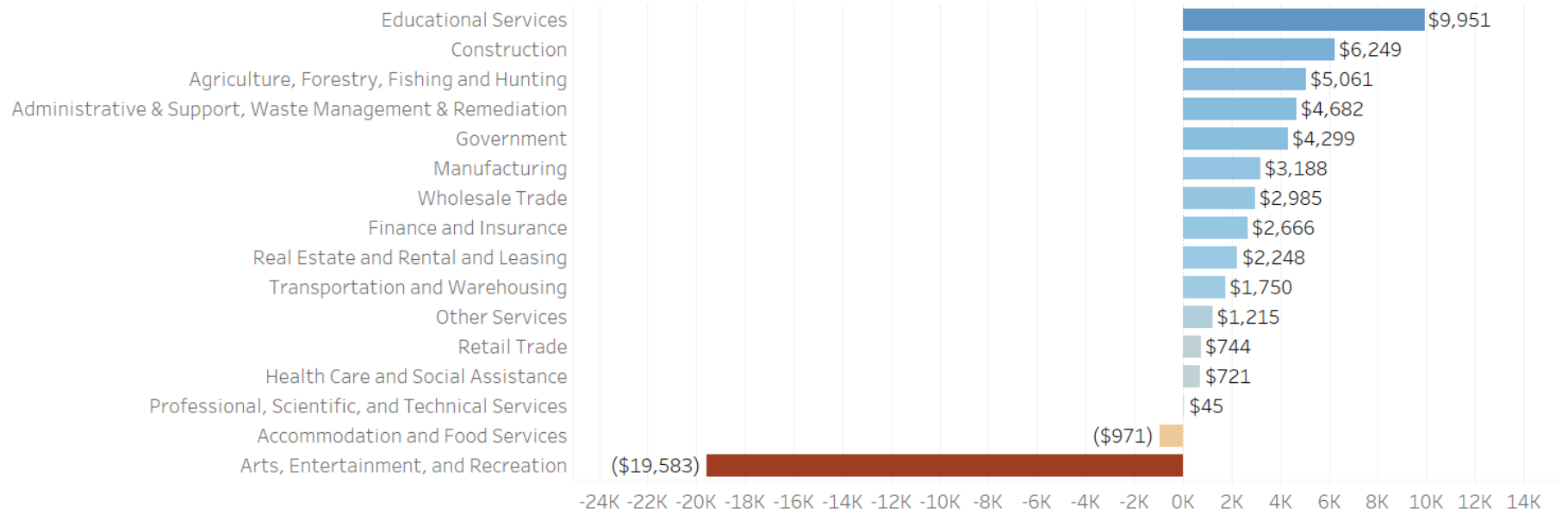
**\$43,655**  
Alabama

**\$52,284**  
United States

Source: EMSI, Garner Economics



**Wage Change by Industry 2012-2017**  
Sorted by Wage Change



**Average Manufacturing Wages 2012-2017**

	2012	2017	Change	Percent Change
Macon County	\$42,946	\$46,133	\$3,188	7.4%
Alabama	\$50,278	\$54,572	\$4,294	8.5%
United States	\$60,029	\$65,962	\$5,933	9.9%

Source: EMSI, Garner Economics